



Protect-All

Rapid Weld™

Instructions for Use

Product Specifications

- 490 mL cartridge
- Part A and Part B 10:1 mix ratio
- Usage Rate:
 - o Floor Seams: 60 lf – 80 lf per cartridge
 - o Base Seams: 80 lf – 100 lf per cartridge
- Cure Time:
 - o Up to 30 minutes
- Shelf life:
 - o 12 months

Accessories

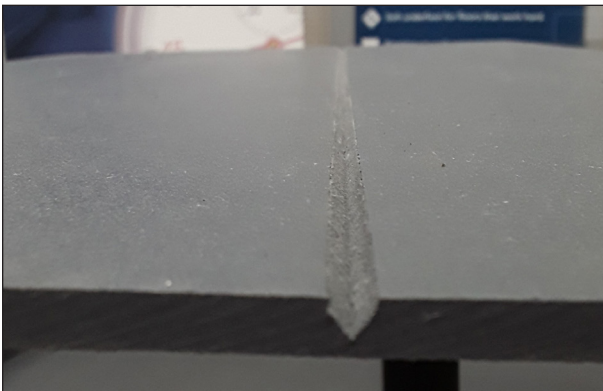
- 490 mL Rapid Gun, Manual
- 490 mL Rapid Gun, Cordless
- Rapid Mixing Nozzle
- Floor Seam Finishing Tool
- Radius Finishing Tool
- Seaming Tape
- 4.77 mm blade

Handling & Precautions

- Refer to the Protect-All Rapid Weld™ Material Data Sheet.

INSTALLATION

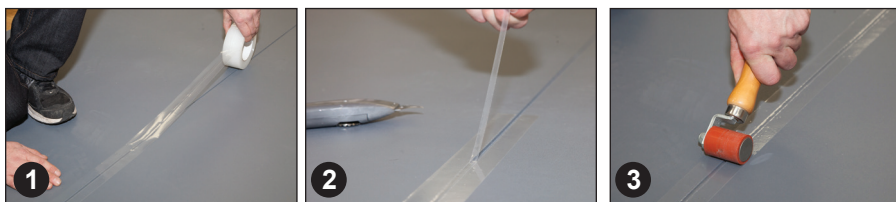
Refer to the Protect-All® Commercial Flooring Installation Manual for proper interior preparations, design, layout and installation of Protect-All flooring prior to the use of Protect-All Rapid Weld.



Grooving the Seams

1. Protect-All flooring seams must be grooved to a depth of $\frac{3}{16}$ " using an electric power groover with a 4.77 mm blade.
 - a. The finished groove must be performed so material is removed equally on both sides of the seam.
2. Remove any debris in the groove using a wet/dry vacuum prior to applying the Protect-All Rapid Weld.

PREPARING THE GROOVE



Apply the Rapid Seam tape so it is centered over the groove, using your hand to initially seal it to the floor.

1. Tape should be applied so the perforated edge does not overlap into the groove.

NOTE: Overlapping tape into the grooved edge can result in an improper finished weld.

- a. When taping a 5' seam, be sure to tape both ends to eliminate any Protect-All Rapid Weld from getting on the surface of the Protect-All.
2. Remove the $\frac{1}{4}$ " perforated Rapid Seam Tape to expose the finished groove.
 3. Seal the tape to the floor using a small hand roller.

CARTRIDGE PREPARATION

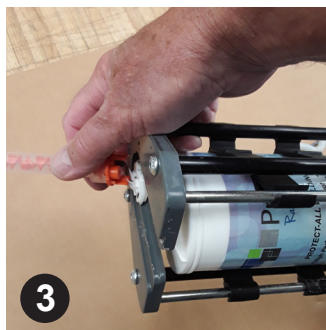


Insert the 490 mL Protect-All Rapid Weld cartridge into the cordless dispensing gun, small cartridge on top.

- a. Unscrew the end cap and remove the plastic insert.

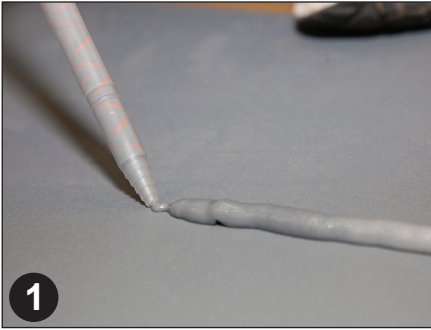


Using a piece of cardboard or scrap Protect-All, dispense the Protect-All Rapid Weld until Part A (white) and Part B (color) flow from the end.



Install the mixing nozzle and secure with the previously removed cap.

APPLYING THE PROTECT-ALL RAPID WELD



Dispense the Protect-All Rapid Weld onto scrap cardboard until a consistent color is achieved. Once this step has begun, you must continue to move product through the nozzle.

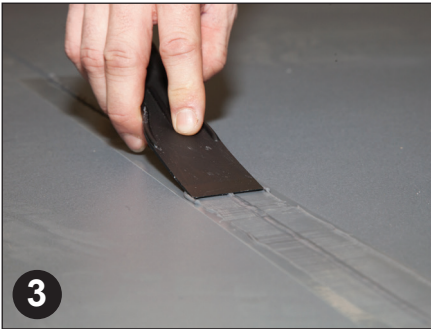
NOTE:

At any time during the installation process where the Protect-All Rapid Weld is allowed to sit in the mixing nozzle for more than a few minutes, a new nozzle must be installed. If Rapid Weld does not flow, or it has changed in appearance, replace the nozzle.



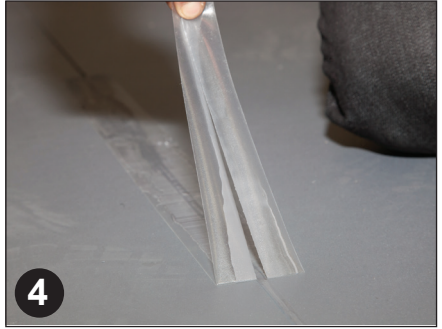
Apply Protect-All Rapid Weld with the dispensing gun at a 90° angle into the prepared groove so it is filled from bottom to top.

If at any time Rapid Weld is not flowing properly, remove the nozzle and look for a blockage in the tube. Clear the obstruction and re-install a new nozzle.



Using the Rapid Floor Seam Finishing Tool, immediately smooth the uncured weld at 20° angle with the bevel facing down. Focus pressure 1" from the end of the finishing tool to leave a thin transparent film on the tape.

To achieve a smooth finished weld, complete step 3 in one pass from start to finish.



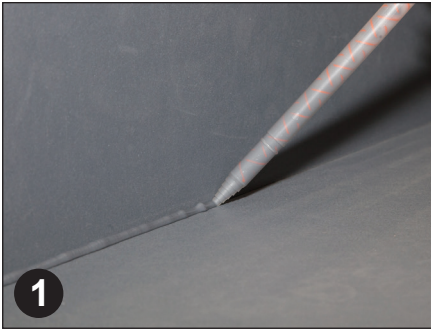
All tape must be immediately removed prior to the Protect-All Rapid Weld curing.

NOTE:

To repair Rapid Weld seams: With a sharp utility blade, cut the affected area out of the groove and apply new seam tape where the repair is to be made. Dispense new Rapid Weld into the void and smooth with seam finishing tool. REMEMBER: Rapid Weld will always adhere to Rapid Weld.

USING PROTECT-ALL RAPID WELD ON THE PROTECT-ALL BASE

Once the floor seams have been filled with the Protect-All Rapid Weld, installation of the Protect-All base and accessories can be completed.



Apply a continuous $\frac{3}{16}$ " bead of Protect-All Rapid Weld at the 90° transition where the Protect-All base sits on the floor.



Using the Rapid Radius Finishing Tool, immediately begin to pull across the uncured weld at a parallel angle to create a minimum $\frac{3}{16}$ " radius transition onto the floor and base.

NOTE: If too much weld was applied, use a clean rag to remove the excess from the tool. Cured weld cannot be removed.

Foot Traffic

1. All foot traffic must remain off the Protect-All Rapid Weld for a minimum of 20 – 30 minutes until a full cure has been achieved.
2. Product will begin to harden in 5 – 8 minutes.

Cleanup

1. Any uncured Protect-All Rapid Weld can be removed from the surface of the Protect-All using a clean damp rag.
2. Cured Protect-All Rapid Weld on the surface of the Protect-All **CANNOT** be removed.

Cartridge Storage

1. Protect-All Rapid Weld cartridges should be stored in a cool, dry place.
2. Partial cartridges must be stored with insert and end cap reinstalled.

NOTE: Please reference the Protect-All Commercial Flooring Training Video on Protect-All Rapid Weld for additional information.

For additional information, please contact the Protect-All Technical Sales Department at 800-544-9538.



800-544-9538

protect-allflooring.com

Rapid Weld Instructions ORIG: 9.30.15 REV: 7.27.17, 8.12.22 – OP250006
Oscoda Plastics and Protect-All are registered trademarks owned by Oscoda Plastics, Inc.